

Monument to a faithful dog

Erected 70 years ago

There is probably no event in the early history of Salida of interest at the time or around which cluster more delightful memories than those attending the death and burial of a "Faithful Dog" and the erection of monument in his memory by Chas. F. Catlin, on what has since been known as "Duke's Hill," twenty-three years ago today.

This remarkable "dog" fell to Mr. Catlin as in inheritance upon his coming to Salida in April, 1898, as the manager of the Monte Cristo hotel, having been a prominent feature about the hotel and depot for many years prior to that time.

He was one of the prominent "Landmarks" of Salida, known, respected and beloved by all, both old and young, throughout the city and among the commercial men, who in those days made the Monte Cristo hotel their abiding place. While in Salida he was a universal favorite and one chief attraction about the hotel and depot.

He was always in front of the hotel upon the arrival of trains and never failed to recognize and welcome regular guests upon their arrival, and his cordiality and friendliness won for him the admiration of all.

When truckloads of trunks were brought here or returned, "Duke" always insisted on being placed on the top of the

load, where he proudly sat as if "monarch of all he surveyed," and the porters were as proud of the privilege of serving him as if he were a king.

Duke passed out of life in July, 1902, at the age of 13 years. He had been afflicted with asthma during the intense heat of that intensely hot summer and for several weeks

had been under the care of Dr. Roe, chief surgeon at the Rio Grande hospital, in an effort to relieve him, but all efforts were of no avail.

His master wrapped him in a white sheet placed him in a box prepared for that purpose. After the arrival of train No. 1, the porters conveyed him to the top of then known as "Little

Tenderfoot Hill," and all the commercial men and many other guests marched up the hill and assisted in digging his grave.

After the body had been lowered, a number of addresses were made, in which more beautiful and touching eulogies could not have been spoken over the remains of a

statesman than were pronounced over the remains of this "only a dog."

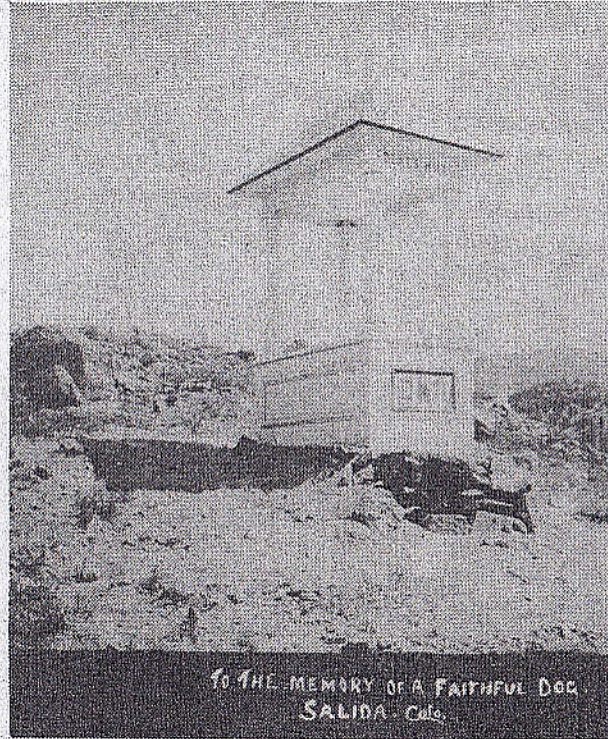
Mr. Catlin soon put men at work removing the loose stones from the hill and clearing it of all movable rubbish and erected a monument, which still remains to the "memory of a faithful dog," and has since been known as "Duke's Hill."

The Salida papers published obituary notices at the time and the event made its way into several of the leading eastern papers and also into a monumental magazine, published in Chicago, in which a half tone cut of the monument appeared.

During all these years Duke's monument has been pointed out to tourists and strangers passing through Salida as one of its objects of special interest and many hundreds have made a pilgrimage up the steep mountain trail to visit his grave.

Thus, after a lapse of nearly a century, this monument, dedicated to the "memory of a faithful dog," remains to tell the story of affection, loyalty and devotion which once existed between a faithful dog and his master and friends.

—Salida Record, Oct. 2, 1925



Duke, the faithful dog at the Monte Cristo Hotel, was a friend of the railroaders. Owned by the hotel manager, Charles F. Catlin, Duke died in



July 1902 at the age of 13 years. His master erected the monument which stands today and is painted and repaired by individuals and organizations.