

Salida

THE CENTER OF COLORADO
THE PLAYGROUND OF AMERICA

*“The Gem City of
the Rockies”*

THE CLIMATE

of Salida has no peer in Colorado. The state-made is made advisedly. The average number of clear days is 328 in a year. The per centage of sunshine during the year is about 90. A day on which the sun does not shine a part of the time is exceedingly rare. Years have been recorded in which the sun was seen in every day. Storm seasons at all times of the year are short. The rains comes in showers, not in days and weeks.

With our many hot springs, grand scenery, the very best in the Rocky Mountain region, sunny days, cool nights, pure water and delightful central location, Salida is the place to find health and pleasure.

Visit it once and you will stay or come again.

The Model City of Colorado



SALIDA, COLORADO

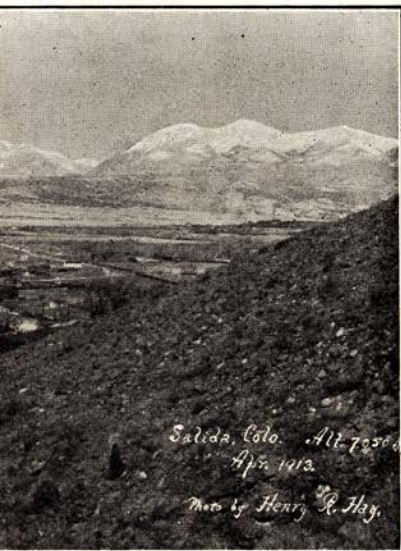
Situated at the base of the Continental Divide of the Rocky Mountains, 25 miles from the famous Marshall Pass and 215 miles southwest of Denver; altitude, 7,050 ft.; population, 5,000; important division point on the Denver & Rio Grande Railroad; Machine shops, Creamery, Flour Mill, Granite works, Limestone quarries, Smelter, Hot Mineral Springs, Rare Scenic attractions, Diverging Point of Four laterals of the Rainbow Route, the famous Inter-State highway, Ideal climate, cool in Summer and Mild in Winter, Pure Mountain water, Important Mining center, 24 miles to Monarch Pass, 13 miles to Poncha Pass.

When you're tired of your job,
And your brain is waterlogged,
Take a rest before you die.
When your sweetheart turns you down
And your weary of your town,
Take a rest before you die.
To the mountains and the brooks,
Take your gun and fishing hooks,
Turn your mind from work and books,
Have some fun before you die.



When you've had a busy year,
Worked full time with little cheer,
Take a trip before you die.
If you cannot spare the time,
Charge it up to reel and line;
Take a trip before you die.
To the streams where fish abound,
Or to lands of stag and hound;
On your door let clients pound—
Have some fun before you die.

If your breakfast you can't eat,
Or you're troubled with the heat,
Go out West before you die.
You can find the trout in brooks,
And the deer in shady nooks;
Go out West before you die.
Fill your creel and bag big game;
Be wild and wooley, don't be tame;
You will get there just the same—
Have some fun before you die.



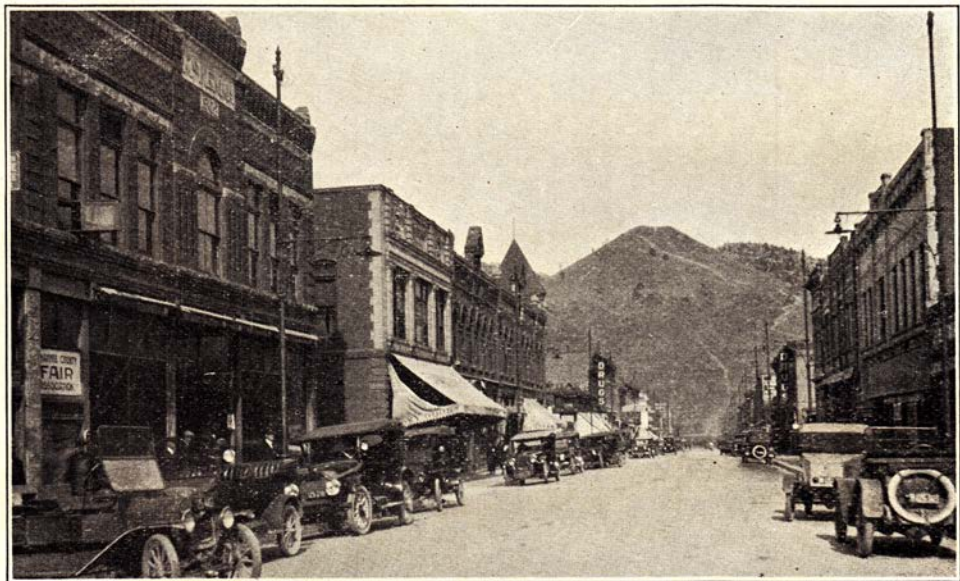
Salida, Colo. Alt. 7050
Apr. 1913.
Photo by Henry R. Hay.

April 1913

When you leave this mundane sphere,
All you have you will leave here,
Have some flowers before you go.
Nice things said when you are dead,
Do not ease the aching head;
Have some flowers before you go.
Funeral flowers no fragrance cast,
Backward o'er the weary past;
You'll be dead too long, at last—
Come out West before you die.



Climbing Monarch Pass, Just West of Salida



F (Main) Street, Salida, Colo., and Tenderfoot Hill



In Castle Garden two miles Southeast of Salida



Alpine Park, Salida



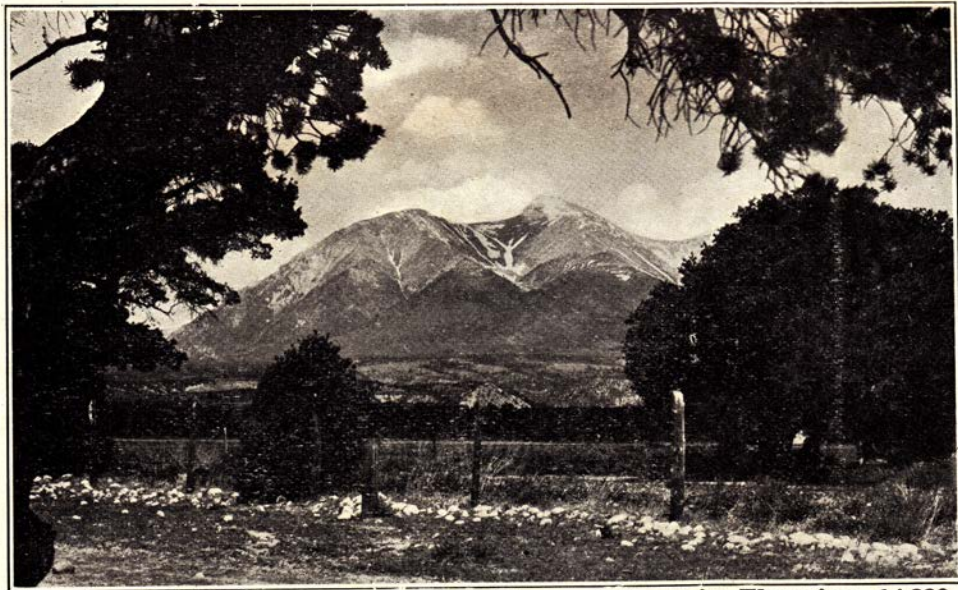
Salida Smelter



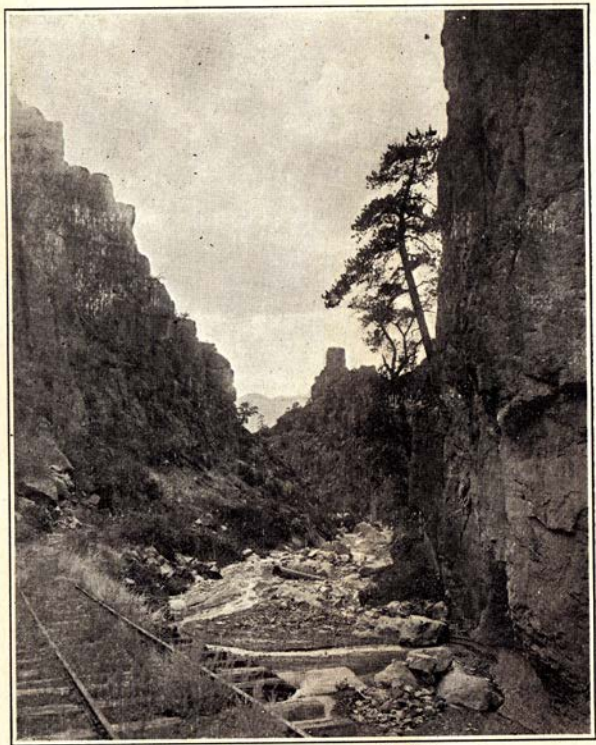
Salida Public Library



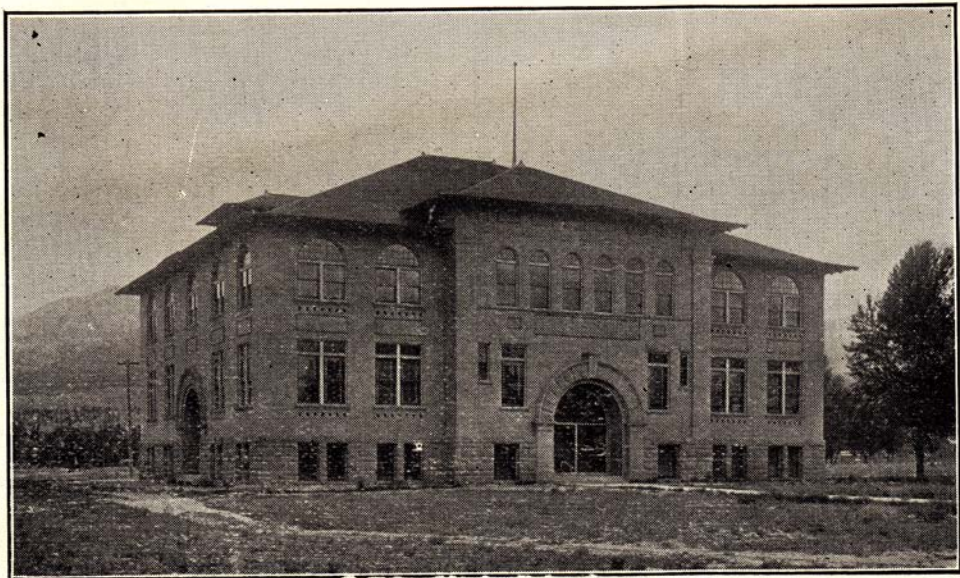
Near the top of Poncha Pass, 14 miles Southwest of Salida



The Angel of Mt. Shavano on Salida's Famous Mountain, Elevation, 14,239



Box Canon, near Salida



Salida High School

MONUMENTAL GRANITE

Salida is just on the eve of a great granite boom. Eastern users and dealers in monumental granite have acknowledged Salida granite to be the finest stock on the market and are piling in the orders. A railroad is in project for the handling of the granite from the fields. There are acres and acres of the fine stock within fifteen miles of Salida, and those interested in monumental stock in its native form have the privilege of visiting the granite fields by way of the famous Ute trail, a mountain road which was originally an Indian trail, and crossed the range to the northwest. The trip up the trail is well worth the time consumed in making it, and the exploration of the monumental granite fields is one long to be remembered.

MINING NEAR SALIDA

Salida is the center of several rich mining districts that are easily reached—the entire section is heavily mineralized and the prospectors find satisfactory showings from which many paying mines ought to be made. No section of our state is better located from which to reach a smelter, with minimum transportation and treatment charges, so that even low grades ores can be handled at a profit.

To the west is the Monarch and Tomichi districts. These districts have produced many millions in past and will furnish millions more.

To the south is Alder and Bonanza. Development work has shown good results in these districts—shipment of ores will continue.

To the north is the Turret-Whitehorn district, in which considerable work is being done.

FARMING AND STOCKRAISING

The fact that a creamery and flour mill are located here is the best evidence that we have flourishing farms and raise alfalfa, grain, potatoes and vegetables of all kinds.

HOT MEDICINAL SPRINGS

PONCHA HOT SPRINGS— Its waters are Nature's Own Remedy. Plunge, Vapor, Mud and Tub baths. Guaranteed cure for Rheumatism, Lead Poisoning, Indigestion and Urinary Troubles.

These springs are only six miles from Salida. There is an elegant road from this city to the Springs and coaches leaves daily, carrying passengers.

MT. PRINCETON HOT SPRINGS

Located about twenty miles northwest of Salida, reached via good auto roads. One of the most beautiful scenic spots in the mountains at the foot of Mt. Princeton. Large hotel, swimming pool, free camp grounds if desired.

WELLSVILLE HOT SPRINGS

Six Miles East on the D. & R. G. R. R.

These springs have been greatly improved and beautified. There is no place in the mountains where one can spend a vacation with more pleasure and comfort.

The broad, swift river flows right by these springs, the hills are nearby, and the canons afford endless places for walks and explorations. There is a splendid driveway from Salida which in itself is a means to enjoy some of the finest scenery in Colorado.

SALIDA CHURCHES

The churches are the most important part of the formula for the making of a city. Its places of public worship compare favorably with those in other places of its size.

The denominations represented are as follows: Methodist, Episcopal, Christian, Baptist, Presbyterian, Seventh Day Adventist, Christian Scientist, Roman Catholic, and Free Methodist. Most of them have good, up-to-date buildings, active, able ministers and live congregations.

THE CITY CONTAINS

Two hospitals accommodating 150 patients; the D. & R. G. Employees' and the Red Cross.

Fifty secret and fraternal societies.

One weekly and one semi-weekly newspaper: The Record and The Mail, each having a large circulation.

Two banks, the First National and the Commercial National; combined capital and surplus, \$180,000; deposits, about \$1,500,000.

Two beautiful parks in the city and a driving park adjacent.

A well equipped fire department with modern auto truck and appliances and a low rate of insurance in consequence.

One wide-awake Commercial club.

Two wholesale commission houses.

Altitude, 7,050 ft.	1 Planing Mill.
Population, 5,000.	1 Steam laundry.
1 Smelter.	1 Bottling works.
8 Churches.	3 Lumber yards.
2 Filling stations.	2 Camping grounds.
6 Garages	1 Public library.
1 Livery stable	1 Telephone system.
1 Creamery	5 Auto repair shops.
1 Flour mill	1 Electric plant
2 Monumental granite works.	
3 Large school buildings.	

Complete municipal water works system, from natural mountain springs.

PUBLIC SCHOOLS AND LIBRARIES

The social status of a community is always measured by its educational institutions and Salida proudly boasts of schools and libraries much above the average. The school buildings are modern and well equipped. The high school belongs to the accredited class and this year graduated the largest class in its history.

The accommodations of the Salida Public library should not be overlooked. It contains over 3,000 volumes and is a beautifully designed library building.

SALIDA: The gateway to Colorado's most wonderful mountain scenery by the DYRGRR or fine Automobile Highways over Monarch, Marshall, Poncha and Cochetopa Passes. To the Gunnison River fishing or to the Cliff Dwellings of **MESA VERDE PARK.**

