

Free

View Book of Salida, Colo.

The Gem
of the Rockies



HUNGARIAN FLOUR.

✂✂✂

The Hungarian High Patent Flour is the leading family flour. It is so far ahead of others that we feel lonely. The mills are located in Denver, but every grocer carries the flour.

Ask your grocer.

THE SALIDA CAFE.

✂✂✂

Though but a young business concern, this cafe has made rapid strides to the front, because of their excellent cooking and service. Mr. and Mrs. George Chamberlain, the genial proprietors, constantly watch the comfort of their many patrons and everyone feels at home at this popular cafe. The place is situated at 128 East First Street, the best lighted street in Salida, having an arc light every 25 feet. Visitors to the city can obtain anything they wish to eat at any hour of day or night at Salida Cafe.

H. E. MATTHEWS & CO.

✂✂✂

H. E. Matthews & Co. is one of Salida's most prosperous real estate firms. H. E. Matthews is an energetic, wide awake, typical Colorado man, and thoroughly understands values and the handling of real estate. The firm's offices are located at 125 West First Street. Mr. Matthews is a notary public and an expert appraiser. Before settling in Salida, be sure to see him.

Phone---Chaffee 89.

McKENNA GROCER CO.

✂✂✂

Jas. J. McKenna has been in Salida ever since the town started. The large, handsome block on F Street, in which his business is located, is owned by him, and the large plate glass windows provide an extremely attractive place for the display of not only fancy groceries, but queensware and the Edison phonograph, of which Mr. McKenna is exclusive agent. The place of business is 220 F Street, and the Phone number is Salida 42. Call on the McKenna Grocer Co. as soon as you come to town.

al 4

Rare
65-
800

"To give your friends an idea where you have been for the last 18 months" God's Country don't you think? "Jrs"



THE FIRST NATIONAL BANK.

Oldest and Strongest in Chaffee County. Capital and Surplus, \$100,000.00. Undivided Profits, \$15,000.00.

OFFICERS AND DIRECTORS:—Rob't Preston, President; J. G. Hollenbeck, Vice-President; V. C. Davenport, Vice-President; H. Preston, Cashier; F. C. Woody, Ass't Cashier; Frank B. Churcher, L. A. Hollenbeck, J. F. Hutchinson.



Interior of the oldest jewelry store in Central Colorado. Established 1882. D. J. Kramer, proprietor and optician, also licensed watch inspector for the D. & R. G. R. R.



A. G. Wood, Monarch Livery, 317 W. First. Best horses and rigs. Phone—Salida 48.



Geo. W. Vaughn's Feed Store, 126 G. Fine line farm implements, wagons and buggies.



Birdseye View of Salida, Colorado. Altitude, 7,050 feet. Population, 7,010.

B. F. MERKEL.

Mr. Merkel is without a peer in Salida when it comes to painting and paper hanging. The people of the town will often wait for several days to allow Mr. Merkel to get around to their special job of work. His artistic eye in hanging paper and selecting the proper color of paint for inside work has made him extremely popular in our town. His prices for the work are always right and he never takes advantage of the fact that he is the superior workman to make an extra charge. Those who have their houses papered and painted by this expert always call again on the same man.



HOTEL DENTON, SALIDA, COLORADO
DENTON HOTEL Co., Proprietors.

Have you ever seen this place?

THE CITY OF SALIDA.

Looking at the location of Salida from a geographical standpoint, and her immense resources, one that is far-seeing can readily understand what is meant when we say: "Salida is destined to become a large city." Salida has, within a radius of a few miles, monumental granite, marble, cement rock, iron ore and most all of the precious metals. The climate cannot be excelled in Colorado—360 sunshine days in the year. Our water is pure spring water, coming from the mountains, and the supply is ample for a city of 25,000 inhabitants.

The population of Salida is 7,010 and is splendidly equipped to handle in good, first-class shape 2,000 tourists at a time. There are five good hotels, seven restaurants, twenty-six private boarding houses, and thirty-one large furnished rooming houses for the tourist trade.

There are fine driveways and beautiful scenery to Wells-ville Hot Springs, Poncha Hot Springs and Hortense Hot Springs. Tourists will also be supplied with camping grounds at the above-named springs. There is good fishing in the following streams:—North Fork, South Arkansas and Poncha Creek.

As to the healthful climate of Salida, we have known of a great many cases where physicians of the east have given up all hope for the recovery of patients who have come to Salida and are now well, stout and hearty. Our school census for 1909 was 1,241 and only one death from disease. We say to you, most emphatically, if you want health, wealth and prosperity, come to Salida.

J. D. RANDOL.



An Every Day Street Scene in Salida.

All the views in this book were taken by
MR. H. R. HAY, studio at 229½ F Street.
Phone—Red 633.



THE COMMERCIAL NATIONAL BANK.

Capital, \$50,000.00. Surplus and Profits, \$8,000.00. The only bank in Chaffee County with a savings department. Pays 4 per cent per annum on savings deposits
D. P. COOK, President. M. J. GUERIN, Vice-Pres't. C. W. ERDLIN, Cashier.

THE TENDERFOOT CLIMB.

Tenderfoot Mountain, as shown in the opposite illustration, is located at the end of our main street and is a source of great pleasure to all who enjoy mountain climbing. The hill is but 700 feet high but is so steep that it makes an interesting climb of about twenty minutes. Once on top, where stands the electric sign with the name of our city, one appreciates the beautiful view of the city and valley and the exhilarating air of the mountains which reaches the summit of Tenderfoot, the same as if one were in the wilds of the Rockies. Just over the summit of the mountain are several deserted tunnels, and right in the vicinity of Tenderfoot, in the early days, a prospector discovered a pocket of gold out of which he took \$12,000. To the right of the largest tunnel lies a spring of pure water, which has the genuine mountain purity, only found in the wilds of the mountains. The trip to the top of Tenderfoot is very popular with Solidans and many a pleasant afternoon is spent on the top of this beautiful little mountain.

EMILY FOWLER,
Instructor Salida Commercial College.



River Front Park and Monte Cristo Hotel, with Tenderfoot in the distance.

PONCHA HOT SPRINGS.

Poncha Hot Springs is located only six miles southwest of Salida. The temperature of the water is from 145 to 185 degrees Fahrenheit, with plunge, shower, mud, tub and vapor baths, which are well known to our people to have wonderful curative properties in all cases of sciatic, inflammatory or muscular rheumatism and many other blood diseases that afflict the human family, there being some twenty springs of different degrees of temperature, the waters of which are carried to the bathing apartments through iron pipes, where it is cooled to the required temperature to suit the different diseases.

The location of the resort is an ideal one, placed as it is far up on the summit of a hill, at the base of a high range of mountains, and bringing within range of the eye one of the most beautiful valleys imaginable, lying at your very feet and covering some 20 miles, including the town of Poncha surrounded by fertile farms with fields of grain and alfalfa. One having an eye for the beautiful of nature seldom tires of the many attractive scenes presented to the view and which have an ever varying change to the eye, as one will notice as they are seen day after day. Some twenty miles away the eye is caught by a sight of the towering snow clad peaks of Mount Ouray and Mount Shavano; it is over Mount Ouray that the railroad climbs on its way to the Gunnison country and the west. As you sit on the hotel porch you can see the many trains as they climb the four per cent grade on their weary way to Marshall Pass, and try to imagine what it was to make the top at Marshall Pass during the snows of the past winter. Turning to the north one can see the magnificent Collegiate group, consisting of the Princeton, Harvard and Yale, and again to the south where looms up the Buffalo Peaks, making a wide range of mountain scenery seldom met with in any country and surpassed by none.

GEORGE S. NELSON, Secretary Board of Trade.

Does it look the same





SALIDA'S SMELTER.

The accompanying illustration does not do justice to the plant of the Ohio and Colorado Smelting and Refining Company, located just two miles from the city of Salida. It is a smelter of six furnaces and twelve roasters, besides a Dwight-Gloyd mechanical roaster, of which there are but few in the United States. The pay-roll has run as high as \$30,000 a month and it is quite common that from 300 to 500 men should be in the employ of the smelter at one time. The plant has a capacity for handling about 1,500 tons of ore a day and runs continuously. Among its equipment is some machinery that took first prize at the famous world's fair at Chicago. The sampler works are large and complete and the system of sampling through their sampler-crusher is the most desirable of any smelter. This concern is not in the trust, but is run independently. It is capable of handling all the ore mined within a radius of fifty miles.



View of Tomlin & Co's Store on Upper F Street, leading grocers and bakers of Salida. Owned by F. M. Tomlin and W. S. Smith.

J. G. MILLER, THE CONFECTIONER.

J. G. Miller's, at 204 F Street, is the favorite place for refreshments. The place is attractively fitted up with a grill room and many are the merry parties that stop for refreshments. Mr. Miller has his own candy manufactory in connection and the quality of his candies compares very favorably with those of the larger cities. Only the purest cream is used in the manufacture of the delicious ice cream that he sells either by the dish, quart or gallon—delivered to parties or other functions. Mr. Miller is ably assisted in the business by his wife and son and it is a well known fact that everyone who visits Miller's comes away well satisfied with the service they have enjoyed as well as the quality of refreshments they have partaken of.

THE GRANITE INDUSTRY.

Did it ever occur to the reader of this book that Salida is situated in one of the fertile valleys of Colorado, skirted on either side by branches of the Arkansas river, which waters more than 100,000 acres of the rich land which is destined in the near future to become very valuable on account of the thousands of quarrymen and monumental granite workers that will be employed by the capitalists that are being attracted here on account of the superiority of our granite over that of the east? And said eastern granite has held full sway for the last 100 years. These valuable Salida quarries are located on the west side of Cameron Mountain, near Manoa, and about twelve miles north of Salida, and in them there are twenty-five varieties of the best quality of granite, which has stood the test of 915 degrees Fahrenheit.

These quarries are owned and soon to be operated by the following companies: Sunset Granite Company, Salida Granite Company, Salida-Barre Granite Company, Higham-Roller Granite Company, Queen City Granite Company, Colorado-Calumet Granite Company, Salida Monumental Granite Company and Benson Granite Company; and also the Chaffee County Granite Company, located about seven miles northeast of Salida.

CHAS. HIGHAM, in Salida since 1897.

From the top of this Mt. can see over
in the San Luis valley. Was on top of it
horseback at one time.



The above illustration shows the finishing plant of the Salida Granite Co., located in the city of Salida. The company does a retail as well as wholesale business and has made many pretty monuments, both for our own cemeteries and those of neighboring towns. They are continually shipping the rough sawed stock to Denver and Colorado Springs.



Interior view of the Exclusive Shoe Store of Cox & Newby, 212 F Street.
The only one of its kind in the city. F. L. Cox and E. C. Newby,
sole owners and proprietors.

J. D. RANDOL.

Mr. Randol has represented the city in the city council for two administrations and is one of Salida's representative men. His grocery business is located at 115 East First Street and his customers come from all parts of the city, because dealing with Mr. Randol is a guarantee that the best goods will be secured for the market price. The efficient corps of clerks and delivery men connected with this grocery make it very convenient for the public to deal with this popular merchant. Mr. Randol has been prominent in Salida in connection with many city improvements and is considered by all people to be a credit to the town.

SALIDA CHURCHES.

The churches are most important in the formula for the making of a city. While Salida, following in the custom of the Great West, is not a church-going town, its places of public worship compare favorably with those in other places of its size.

The denominations represented are as follows: Methodist Episcopal, Protestant Episcopal, Christian, Baptist, Presbyterian, Seventh Day Adventist, Christian Scientist and Roman Catholic. These all have good, up-to-date buildings, active, able ministers and live congregations.

The Presbyterian was the first church organized and built in 1880. The old building was replaced by a splendid brick structure in 1901 and it is now the down-town church of the city. It is often referred to as "The Church of the Strangers."

The Christian Church was built last year and is one of the finest churches in the city. The architecture is very pleasing and it is very comfortably and neatly furnished. It was dedicated about one year ago, free from all indebtedness.

The M. E. congregation was instrumental in securing the Carnegie "organ gift" and placed a fine pipe organ in its church last year.

The St. Joseph's Church (Roman Catholic) is in the process of building and, when finished, will be one of the most beautiful in the city. It is of the gothic style of architecture and is built of pressed brick with stone trimmings; it will cost about \$12,000.

The Christian Science Church has only a reading room, in which the services are conducted. There are plans and preparations being made to build a church to accommodate the fast increasing congregation.



First Methodist Church
 Church of the Ascension
 Seventh Day Adventist Church
 St. Joseph's Catholic Church

First Presbyterian Church
 Church of Christ
 First Baptist Church



Exterior view of the Bateman Hardware Co's Store at 119 F St., owned by Geo. F., Fred L. and Walter C. Bateman. Hardware, plumbing, farm machinery, mining supplies and electrical goods.

CHAPMAN & PAXSON.

The leading builders and architects of Salida are Chapman & Paxson of 226 G Street. The members of the firm are Charles B. Chapman and J. G. Paxson. Mr. Paxson is a professional architect, being capable of designing and finishing any design in architecture. He is the only man high up in this branch of the trade in the city. Mr. Chapman has been in business for some years in Salida and is exceedingly popular and well thought of because of his accuracy and reliability. Their place of business is centrally located and many of the attractive designs, etc., in interior work in Salida have been executed by this up-to-date firm.

D. & R. G. R. R. AT SALIDA.

Salida is the junction at which the narrow gauge connects with the standard gauge on the main line. The service of freight from Denver is just one day. The fare to Denver is but six dollars and it takes but one night to make the trip. The yards at Salida are extensive and besides this there is a first-class machine shop and two round-houses. A regular system of car repairing is always carried on in the D. & R. G. yards, a regular force of men being employed in this work. The men employed by the company number over 600 and all high-grade workmen, there being but a few foreigners among them and they are employed on the coal chutes. The switching and side-tracking of sleepers from Denver make it very convenient for those who do not care to rise early in the morning. It is possible for passengers to retire about 9 p. m. at Denver and are not obliged to arise the next morning until they please, as the extensive switching tracks make it possible to set the sleeper off the main train and leave it there. The Rio Grande has recently made surveys to increase the size of both depot and shops and in the very near future Salida will have as extensive shops as those of Denver. The railroad also supports a large hotel—the Monte Cristo—a picture of which is shown elsewhere.



Denver & Rio Grande Railroad Yards at Salida.

MARSHALL PASS.—On Narrow Gauge of the D. & R. G.

This world famous route for the tourist and sightseer can be seen only via Salida and over the Rio Grande. The wonderful mountain scenery can never be appreciated unless seen. Leaving Salida at 6:30 a. m., we first pass the famous medicinal Poncha Hot Springs. Good accommodations are to be had at the Jackson Hotel at Poncha proper. Passing on we enter the Sangre de Cristo range of mountains. Following Poncha Creek, a sparkling mountain stream, we wind up the mountain until the summit of the pass is reached, an altitude of 10,050 feet, nearly two miles above sea level. At this point, on the summit of the Continental Divide, the traveler can see the water-shed, running one way to the Atlantic and the other way to the Pacific. We now pass down the other side of the divide, through the Gunnison Valley, famous for its streams stocked with an abundance of mountain trout, with game in close proximity. Splendid accommodations for the sportsman will be found at Gunnison and all along this route. We now follow the Gunnison

River through the famous Black Canon, 12 miles long. In this canon are located the Currecanti Needles, from which the coat-of-arms of the Denver & Rio Grande Railroad is taken. Leaving this we pass over Cerro Pass into the Delta and Montrose fruit country, which is not exceeded in the United States. At 5:55 p. m. we are in Grand Junction, Colorado, ready for our western trip via the Rio Grande.

REMEMBER.—All tickets on the Rio Grande are good to stop over at Salida, allowing travelers to go over Marshall Pass to Grand Junction. Passengers going east can stop over at Grand Junction, take the narrow gauge through the Black Canon over Marshall Pass to Salida, where they again take the broad gauge east. Stop at Salida and invest.

D. J. KRAMER.



Interior view of T. C. Bode's Drug Store, corner of F and First Streets.
Prescriptions are right if put up by Bode.



A View of Marshall Pass



Frank R. Powell
FRANK R. POWELL

OSOS GRAND THEATRE.

Messrs. Powell & Brewer organized The Osos Amusement Co., to lease and conduct Salida Opera House. They show high-class motion pictures every night for a 10c admission, including illustrated songs by a popular soloist and a full orchestra, giving the best 10c picture show in the state.

Only first-class road attractions at popular prices are brought to the Osos Grand.

This firm also conducts the business of the Salida Bill Posting Company.

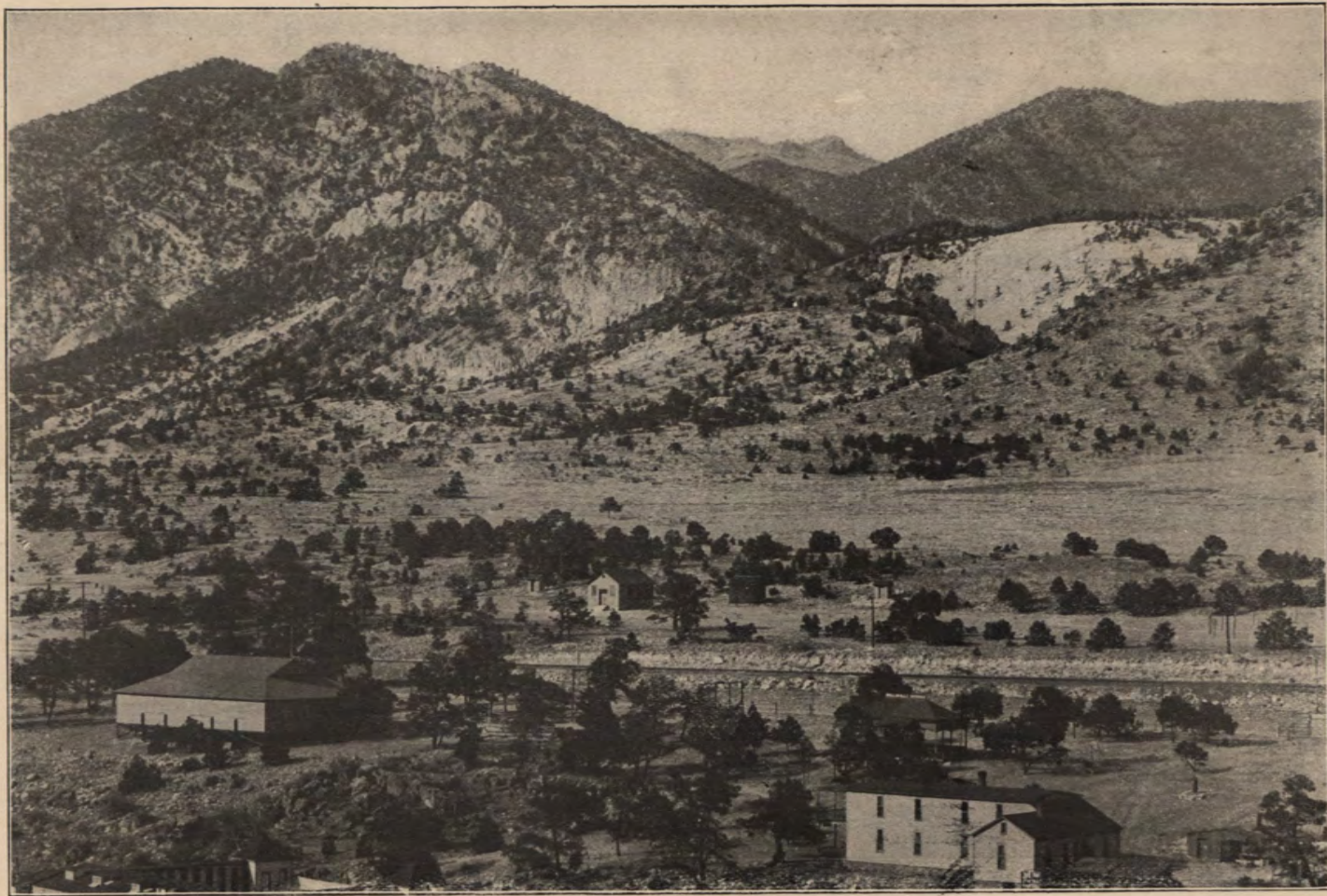


N. J. BREWER

WELLSVILLE HOT SPRINGS.

Wellsville Hot Springs, distant to the east five miles, on the main line of the Denver & Rio Grande Railroad, is one of the most wonderful attractions of the state. The place is well supplied with accommodations for bathing and for parties on pleasure bent. The water is warm enough for a bath even in winter and one pool is sufficiently large to make a swim long to be remembered, and when one comes out of the water there is a feeling of greatly renewed life and restfulness that makes the bath one of great pleasure, as the medicinal properties of the water are truly wonderful. The mountain scenery surrounding the springs is magnificent and the Arkansas River, which flows quite near, is a beautiful, rapid-flowing mountain stream. The grounds are supplied with a good hotel, dancing pavilion and many other attractions which make it an ideal place for picnic and pleasure parties, of which they get their full share, thus adding another attraction to Salida which is made use of frequently. The place is owned and controlled by Mr. V. C. Davenport, who is president of the Salida Lumber Co., the leading lumber and coal dealers of Salida.

GEORGE S. NELSON, Secretary Board of Trade.



The Wellsville Hot Springs.



C. F. Foote Furniture Co.

C. F. Foote came to the Arkansas Valley March 1, 1879, one year before Salida was located and surveyed. He invested in business property and engaged in business in May, 1882, and is the pioneer dealer now. His method of business being so popular has made him well liked by all. Mr. Foote also deals in awnings, having two patented improvements that make it a pleasure to raise the awning instead of a task. This patent is guaranteed to make the awning last much longer than otherwise.

21 Years in Salida.

J. W. DeWeese, real estate, loans and insurance. Notary public.

Office of The Salida Building and Loan Association. Organized 1886.

111 East Second Street.

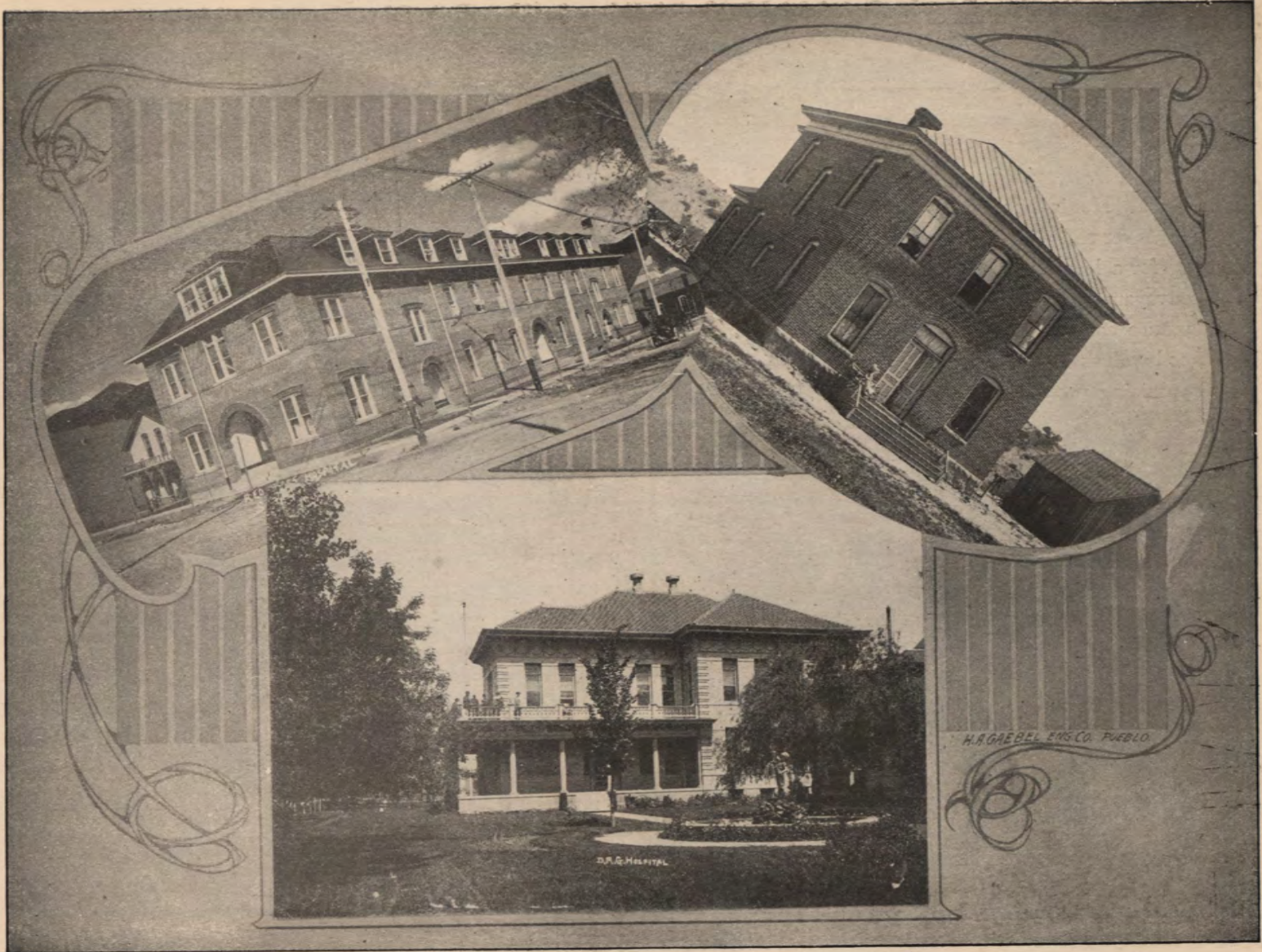


J. W. DeWEESE.

SALIDA'S HOSPITALS.

Salida has three hospitals, as shown by the illustrations. Doctors generally concede that the climate of this place is better adapted to the caring for the sick than any other climate. This is the reason that the D. & R. G. Railroad has selected this spot for its hospital, and this is the reason that Dr. F. N. Cochems has recently expended \$37,000 in the erection of a thoroughly up-to-date hospital that will accommodate sixty-five patients at one time. And this is the reason also that the County Hospital is located in Salida. The Red Cross Hospital is the peer of them all, it being fully equipped with all the latest appliances, both in the operating room and in the matter of electrical conveniences, such as the electrical pad, to be used in the place of a hot water bottle; also the electrical touch button to call the nurse—by a press of the button a light is lit in the nurse's room and also in the superintendent's office. All the electric light globes in the wards are covered with frosted glass, but if the patient wishes to read all that is necessary is to press a button at the head of the bed and get the necessary light in the right place for reading. Every precaution is taken for safety in operating, all the instruments being sterilized by a regular steam apparatus especially made for the purpose.

OLIVER A. LEONARD.



D.R. & HOSPITAL

D.R. & HOSPITAL

H. R. GAEBEL & CO. PUEBLO

W. D. ERWIN.

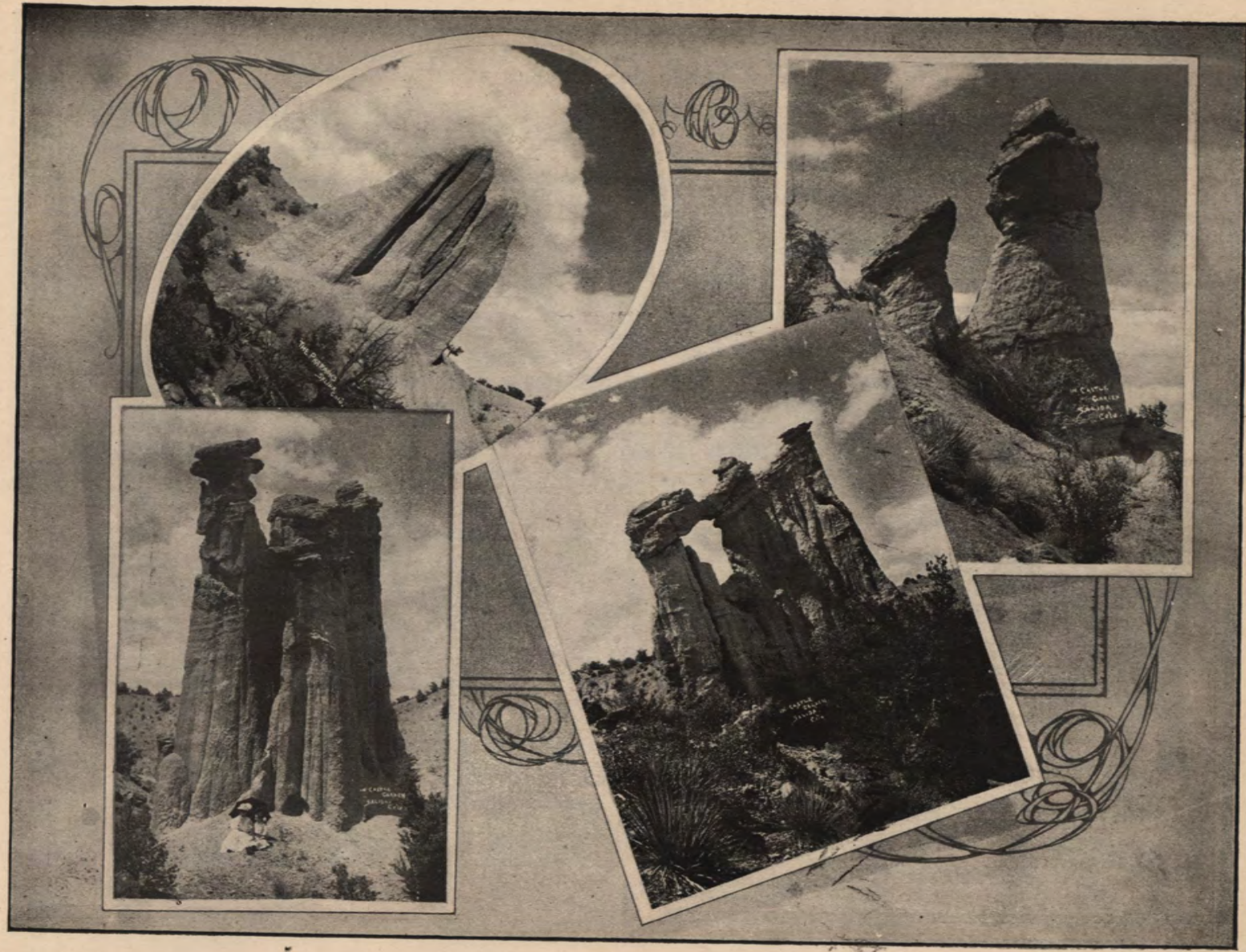
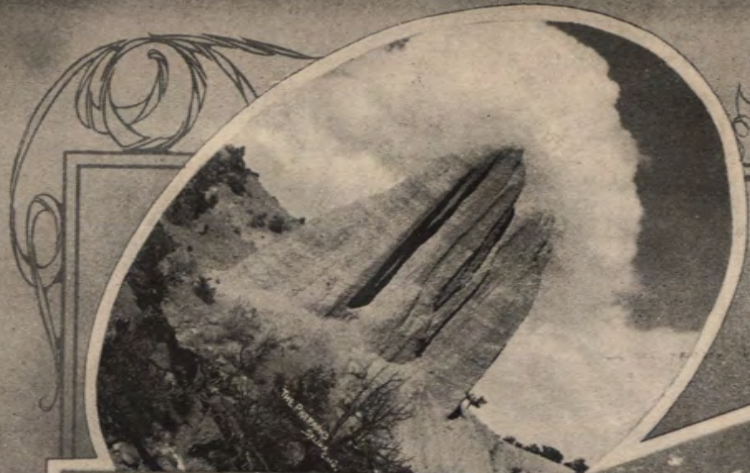
W. D. Erwin has offices in the Sandusky Block. He is one of Salida's live real estate men, ever ready to help those out who are searching for a location. He is also notary public and conveyancer, and agent for many of the best insurance companies. Being an excellent judge of good values Mr. Erwin is often called on for appraising property.

CHURCHER & JOHNSON.

Two better men than Churcher & Johnson could not have been selected for Salida's undertakers. They also deal very extensively in all kinds of fine furniture, and a comparison with prices in other cities will convince any one that it pays to deal with this square firm when really fine furniture is wanted. Their place of business is at 112 East First Street. The telephone number is Salida 81.

CASTLE GARDEN.

This famous resort for picnic parties and lovers of the wonderful in Nature is located three miles east of Salida, south of Arkansas River. It is easily accessible by carriage and not too distant for a vigorous walker to attain. Here Nature has chosen to shape earth's surface into the most beautiful, weird and fantastic forms. The most striking and imposing of the many peculiar shapes assumed by these strange rocks are shown in the accompanying illustration. Very little strength of imagination is required to discover in these myriad of natural formations a counterpart of every conceivable edifice which human hands have contrived, from the most diminutive hut to the most colossal cathedral or imposing monument. Castle Garden is a favorite resort for "the natives" as well as the tourist and no visitor to the fair city of Salida should leave before viewing this scene of natural marvels.



C. P. CROZER.

Mr. Crozer is one of the pioneers of Salida and is universally popular. His stationery business is located at 120 F Street. The daily papers all come to the Crozer Stationery Store and it is the recognized headquarters for out-of-town people who want the daily papers. He also carries blank books and school supplies, besides souvenir postal cards and other knickknacks as are popular with the traveling public. A visit to Salida without a visit to the Crozer store is very incomplete, because Mr. Crozer is always glad to see strangers and show them his many wares.



windows marked are the suits kept
CREWS-BEGGS.

Crews-Beggs' is the department store of Salida. They deal in dry goods, millinery, furniture, tinware and light hardware. W. D. Hatfield is the efficient manager and has been with the firm for fifteen years. His way of managing this enormous business, the largest in Salida, has so pleased the owners that they seldom have a suggestion to make. The corps of clerks are experts in their line and whenever a customer calls at Crews-Beggs' they get just what they want by merely hinting for it. The Crews-Beggs building is one of the main buildings on F Street.



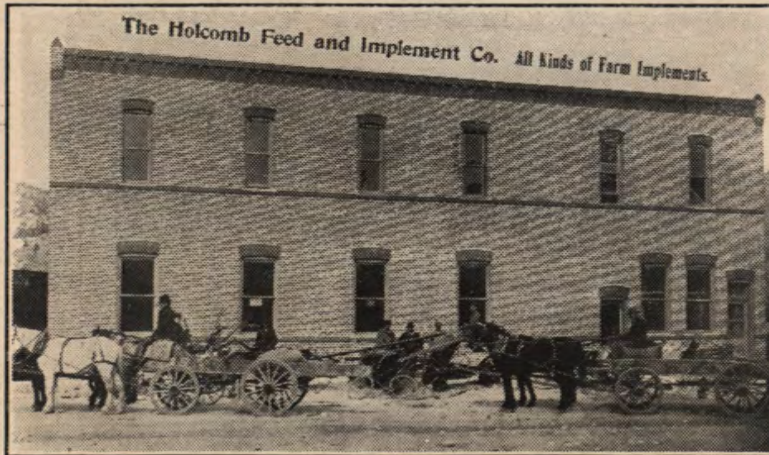
Delivery wagon of the Best Laundry. The equipment of this laundry compares with that of any city laundry.
W. H. Flannery, proprietor.



THE ROYAL GORGE.—Coming to or going from Salida one passes through this marvelous gorge. The scenery between Salida and the gorge is very grand indeed, in places being almost as grand as the deep cut.



Building just erected by Crutcher & Plimpton, commission merchants, on West Second St.



J. H. Holcomb is the proprietor of this extensive business which has had a very rapid growth within the past year at 236-240 West Third Street.

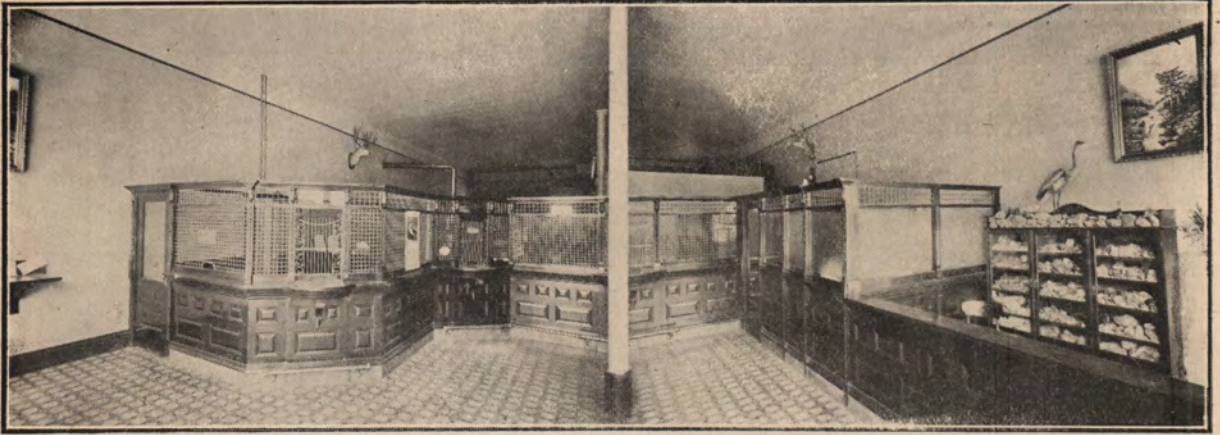
SCHOOLS AND PUBLIC LIBRARIES.

The social status of a community is always measured by its educational institutions and Salida proudly boasts of schools and libraries much above the average. The school buildings are modern and well equipped. The High School belongs to the accredited class and this year graduated the largest class in its history. A good library is being established in connection with the school. There are now 2,000 volumes in the High School and grades with 3,000 volumes of supplementary reading. There are twenty-four teachers employed and the recent census shows 1,241 pupils. There was but one death in the schools during the year and at no time was the progress of the schools retarded by contagious diseases.

The most notable improvement to the town made during the past year is the new Salida Free Public Library, which has been built and donated to the city by the ladies of the Tuesday Evening Club. Through their efforts the Carnegie gift of \$9,000 was secured and \$3,000 raised for the building. The lots on which the building stands are beautifully located on Alpine Park and were donated by Mrs. A. C. Ridgway, who was the first president of the club. The building is of the mission style of architecture and is built of white pressed brick. The interior is finished in hard wood and the mission furniture is used throughout in furnishing. There is in it a reference room, set aside for the reference library to be built up from the estate of Major William Penn Harbottle, which was willed by him to the Tuesday Evening Club for the establishing of a reference library. The building, together with about 2,000 books, was formally turned over to the city by the Tuesday Evening Club, with appropriate ceremonies, on May 10, 1909, and since that time has been open to the public.—MRS. J. A. GRAVETT, Librarian.



Top—Carnegie City Library Center—Central School Bottom—High School



Interior View of Merchants National Bank of Salida, Colorado.

Capital, \$50,000.00. Conservative banking in all its branches. All business transactions given the most careful attention. Collections solicited and promptly handled.
Correspondence invited.

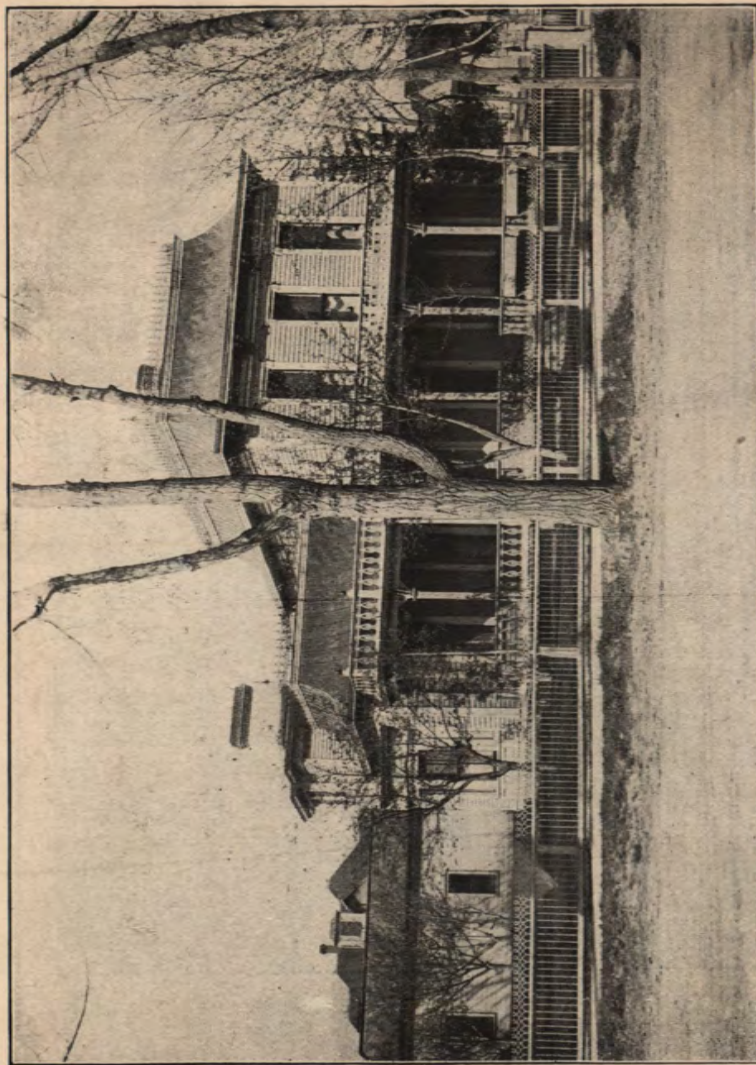


The Home of Good Clothing---Store of Quality.

SAM K. MURDOCK, President and General Manager . BEN GRAF, Secretary and Treasurer



The Arkansas River and Mount Shavano.



Residence of W. W. Roller, Fifth and F. Office—Opera House Block. Real estate and mines.

MINING NEAR SALIDA.

Salida is the center of several rich mining districts that are easily reached—the entire section is heavily mineralized and the prospector will find satisfactory showings from which many paying mines ought to be made. No section of our state is better located from which to reach a smelter, with minimum transportation and treatment charges, so that even low grade ores can be handled at a profit.

To the west is the Monarch and Tomichi Districts. These districts have produced many millions in the past and will furnish millions more. The ore bodies have proven quite extensive and the development work done during the past year has shown increased values and quantities

To the east is the Cleora District. Some copper, lead and silver ores have been found, showing strong, well defined veins. Work is being pushed on these and the indications are that a paying copper mine will be opened up, as depth is showing good copper ore of high values.

To the south is Alder and Bonanza. Development work has shown good results in these districts and the shipment of ores will continue, and as better shipping facilities are given the tonnage will be greatly increased

To the north is the Turret-Whitehorn District, in which considerable work is being done. Plants of machinery are being installed and several mines are about ready to resume shipments.

Thus, from all the mining sections, surrounding our city, come very encouraging reports of ore bodies found, from which increased shipments will be made during the coming season.

W. W. ROLLER.



Exterior and interior views of the elegant home of Mrs. L. A. Weaver of the Weaver Agency.
Real Estate and Notary, with offices opposite the Postoffice.

GLOYD & BROMLEY.

Easily the leading real estate firm in Salida. Frank W. Gloyd and Frederick A. Bromley, real estate dealers, insurance, loans, notary public. Offices in Hively Block, F St. Phone—Red 201.

E. C. BERRIAN.

The name of Berrian is very well known in Chaffee County, for Mr. Berrian has been here all his life. He is proprietor of one of the best and most modernly equipped stationery stores in Salida. It has become to be a known fact that it is an easy matter to get what you want in the stationery line at Berrian's Stationery Store, 115 F Street. The line of magazines and other high class literature at this store is a credit to Salida and visitors will experience no difficulty in finding plenty of reading matter here at the right price to take with them on the train. Mr. Berrian also carries kodaks and supplies and is agent for the Oliver typewriter. Mr. Berrian is also prominently connected with Salida corporations and other business interests.



THE SALIDA MAIL.

THE MAIL stands alone in the semi-weekly newspaper field of Chaffee County and is recognized as the leading and most progressive newspaper, devoting its pages every Tuesday and Friday to a full report of county as well as Salida city news. It is delivered by carrier to Salida homes. THE MAIL has held a high position among Colorado newspapers for thirty years. It is owned and published by E. A. Newton, at 127 East First Street. THE MAIL'S job printing department is one of the largest and most complete in the state outside of the big cities. This booklet was printed by this department.

THE SALIDA RECORD.

The accompanying picture is an interior view of THE SALIDA RECORD, one of the oldest papers in Chaffee County. The view is of the mechanical department only and it shows the immense amount of machinery required in an up-to-date printing office.

The Record "grew up" with Salida and has been closely identified with every forward step the city has made in the twenty-five years



of its existence. The present owners, Messrs. H. J. Foulk and O. R. Meacham, have been identified with the paper for nearly ten years and have lived in the Arkansas Valley even before Salida was on the map. The paper enters two-thirds of the homes in the entire valley and is recognized as an exponent of justice and morality.

J. F. HUTCHINSON.

Mr. Hutchinson is one of the pioneer meat men of Salida. He carries on an extensive business at 123 F Street and has many customers that have traded with him for years. The quality of meat he handles is away above the average butcher shop and his line of fresh vegetables is conceded to be the best. Mr. Hutchinson owns a goodly number of cattle and kills only the choicest specimens for his Salida trade.

HAMPSON BROS. & VALDEZ.

This firm has a most commodious grocery at 237 F St. They have always been known for carrying the very best grade of groceries and meats, and have numerous friends in the town because of their integrity in business as well as the superiority of their goods. The firm is composed of T. J., Jr., C. K. and R. L. Hampson and Don Valdez, all of whom are experienced in their line, consequently the business never suffers for lack of a man who understands affairs of the store.

G. T. & F. D. GRANGER.

Granger & Granger are well known for their reliability in horseshoeing and general blacksmith work. They also carry a full line of vehicles and farm implements, which they sell at a very close margin. Their shops are located at 133 West Second Street. These gentlemen are among the best known business men in the city and are well known for their reliability and general integrity, as well as their ability in the blacksmithing trade.

SAM HUNT.

Mr. Hunt was one of the first to engage in the buying and selling of second-hand goods. He came to Salida about 15 years ago and has made many friends because of his square method of dealing in this line. He always pays the highest price for goods and sells them on a small margin. His place of business is located just a few doors from the opera house. Mr. Hunt is permanently located here and will continue to do a strictly high-class business in his line.

SALIDA'S MODERN DRUG STORE.

That a town the size of Salida, but 7,010 population, should have a drug store like the Salida Drug Company is something out of the ordinary.

It is also out of the ordinary that a man so highly educated in the pharmaceutical profession should locate in anything but a large city. But such is Salida's fortune that she should have on her main street, F street, corner of Second, a modern, up-to-date drug store, fitted up in the same elaborate fashion that a city drug store should be. An "ice-less" soda fountain with large plate mirror, also full length plate-glass show-cases, together with glass-labeled bottles for the best quality of drugs and all the other accessories of the drug store are in A-1 condition and quality. In fact it may well be said it is a drug store for particular people, for besides the equipment the most particular people are its proprietors, viz: H. W. Brick and Mrs. Lucy P. Jones.