

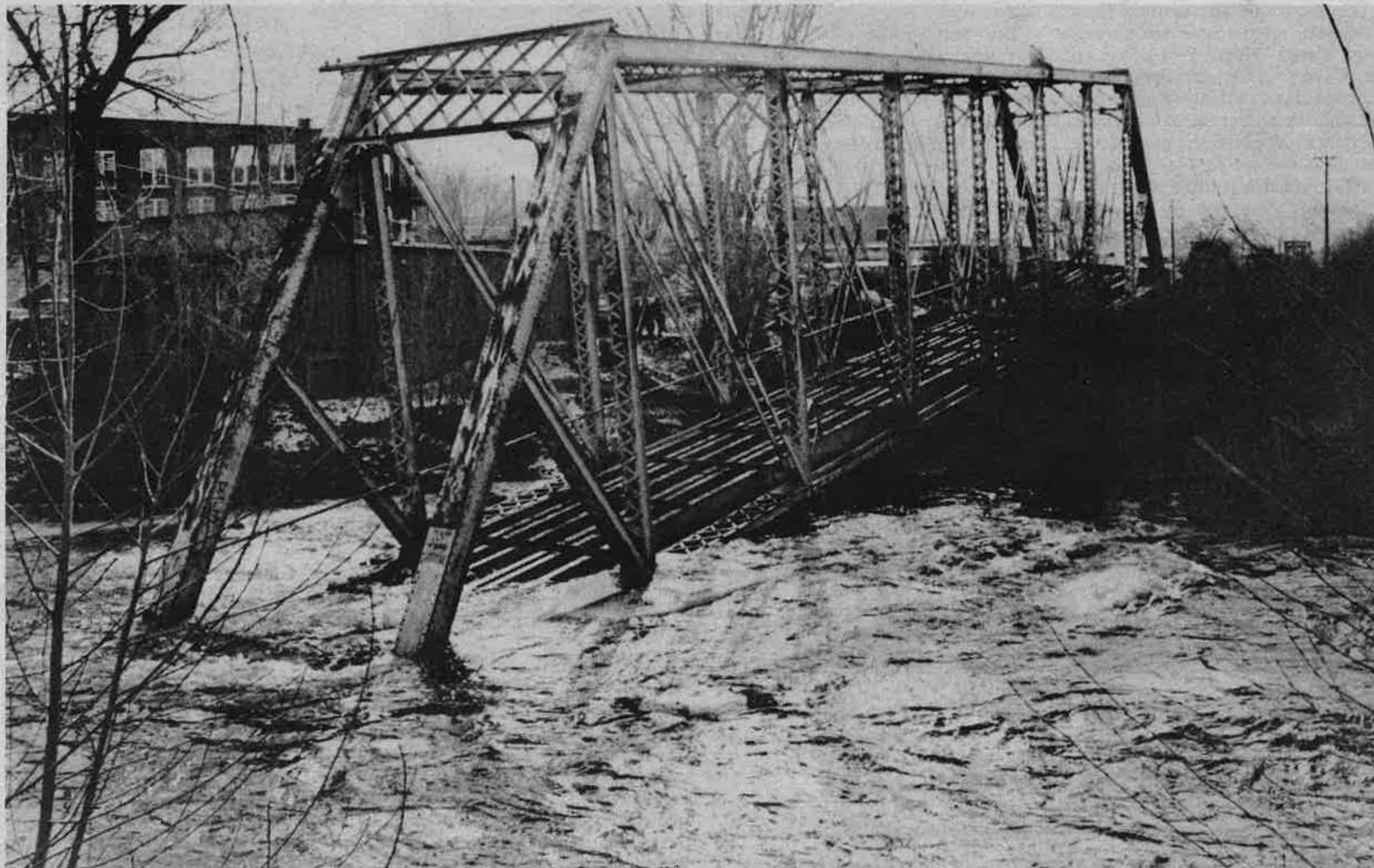
THE MOUNTAIN MAIL

SALIDA, COLORADO

VOLUME 105

NUMBER 176

FIFTEEN CENTS



THE D&RGW BRIDGE no longer spans the Arkansas River. On Monday afternoon a railroad salvage crew, using heavy equipment, first pulled the bridge off its moorings and halfway across the river, as seen here from the north side of

the river. At this point, the southern third of the bridge was cut off. That made it possible to bring the remaining two-thirds out of the river with heavy equipment. Plans are to cut the bridge into 5-foot scrap pieces.