



**SPECIAL CAR** — Shown beside the special, private care attached to the regular D & RG train going West Saturday are several Salidans who made the special trip as far as Buena Vista to mark the last trip West of Salida by the D & RG passenger trains and two members of the Railway Historical Society. This special car, owned by the Intermountain Chapter of the National Railway Historical Society is rather special. It was built in 1887, redone in 1916 and weighs 89 tons. It was bought from the Burlington railroad, who had built it originally for their staff. The area chapter of the Society commemorated the final trip West of Salida and through the Tennessee Pass by making the trip in this car. Mountain Mail Photo



**COMING IN** — The train coming in above is the last train that will continue West of Salida on toward Grand Junction, and through some of the most beautiful, scenic country found anywhere.

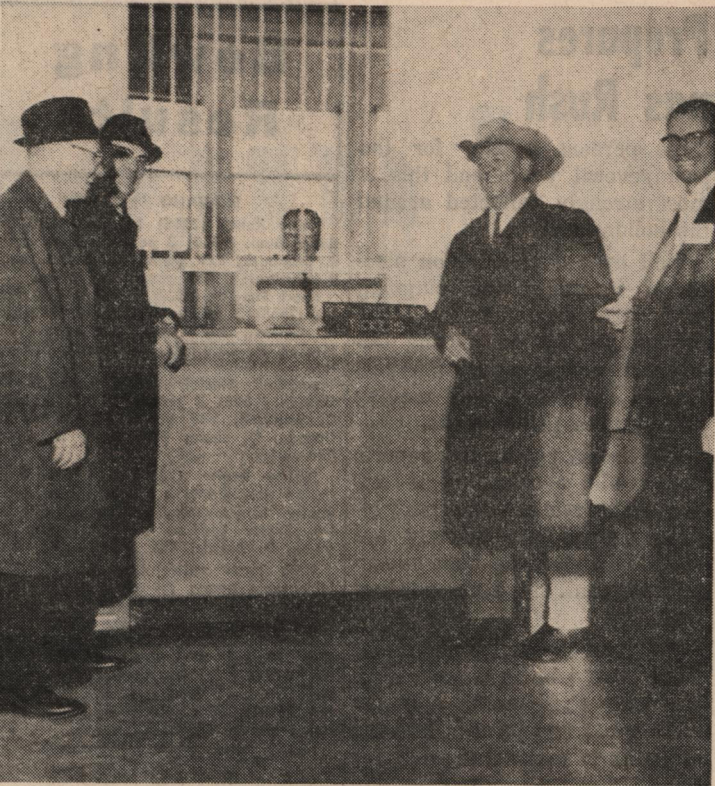
**Mountain Mail Photo**





**LAST CHANGE** — W. J. Kelly, conductor, prepares to change places with the conductor just leaving the train in Salida Saturday. Kelly was conductor on the final trip made West of Salida by the train. His new headquarters will be Grand Junction. Several passengers are shown either waiting to get on or getting off the train.

Mountain Mail Photo



**LAST TICKET WEST** — Shown at the window in the Salida railroad station buying their tickets for a sentimental journey West (or north or what-have-you), these civic leaders from Salida purchase the last tickets sold for a passenger going West of Salida. From left to right are George Oyler, Marion Chelf, Lou Flower and Bill Murphy. Ticket seller was Lester Bush. The man behind the camera, also making the trip, was Bill Skains. They were met in Buena Vista by Clark Kelleher, who returned them to Salida by car. Mountain Mail Photo